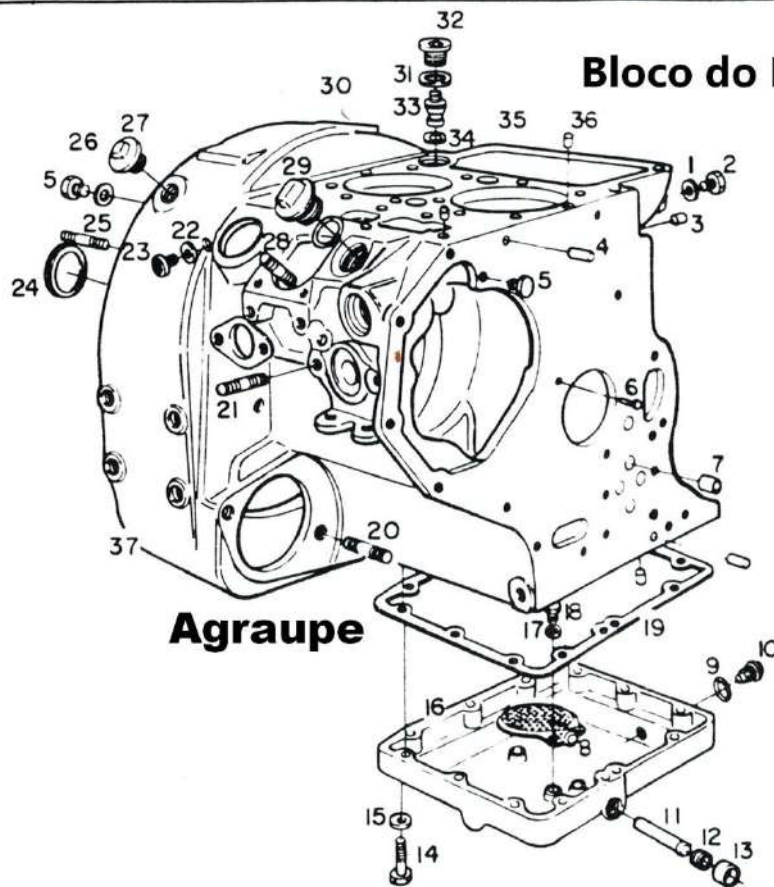




AGRALE

MOTOR M - 790

1



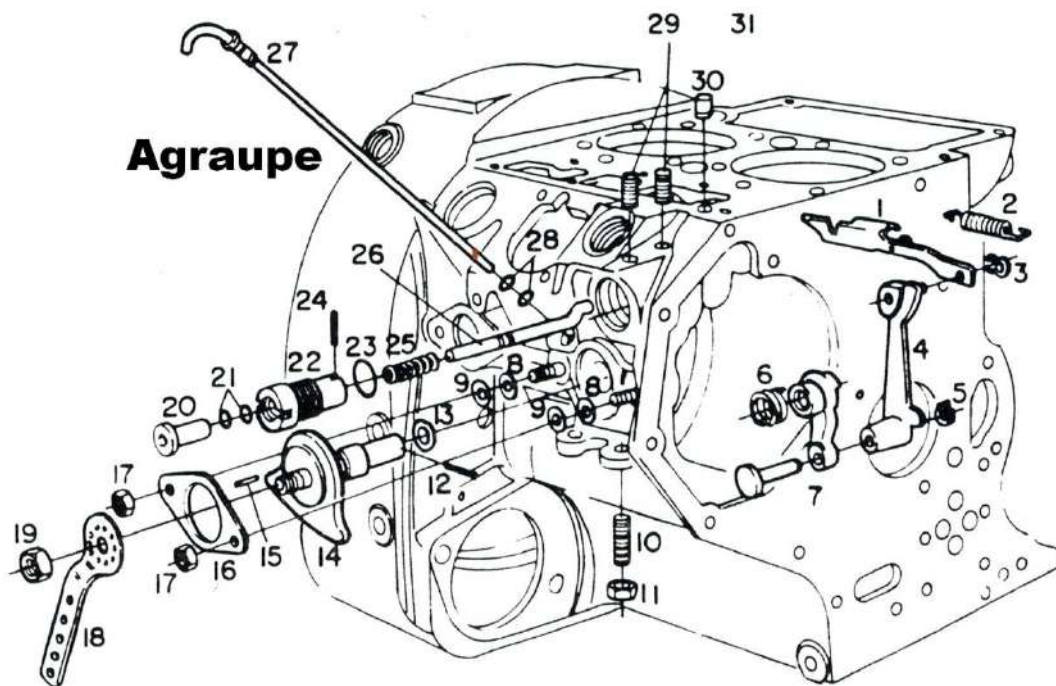


AGRALE

MOTOR M - 790

2

Sistema de partida



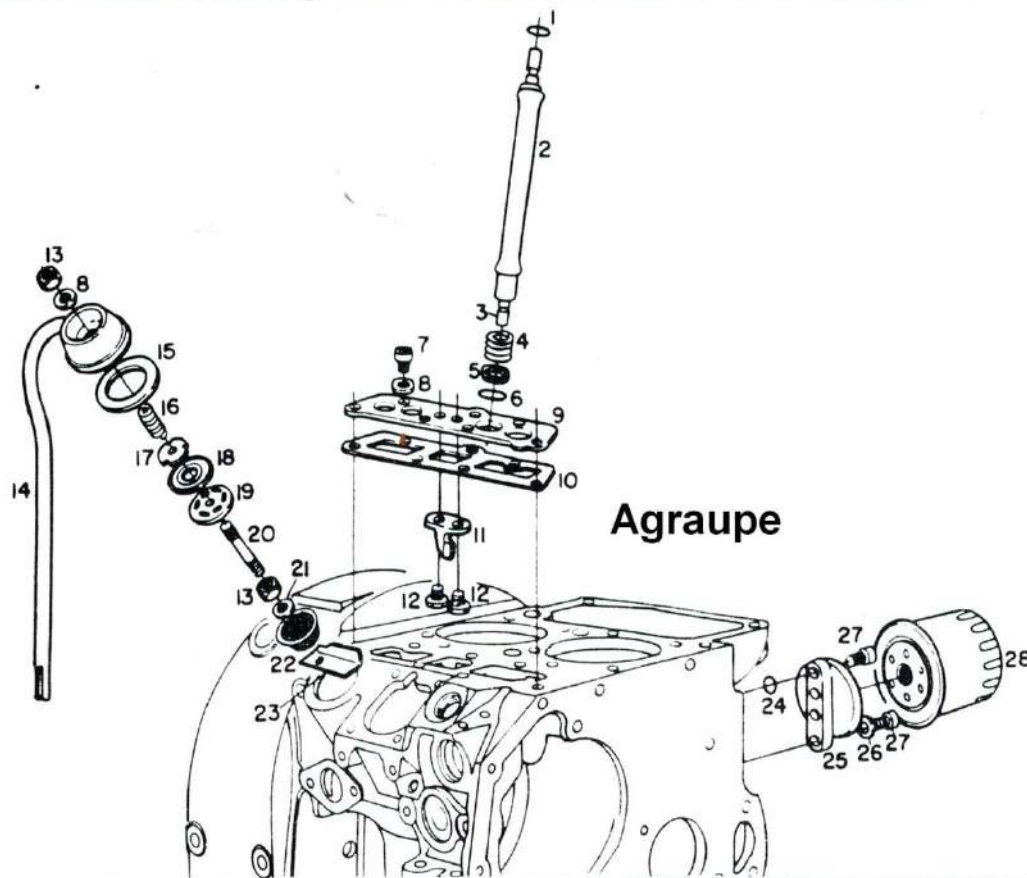


AGRALE

MOTOR M - 790

3

Sistema de tubo respiro-filtro do carter e vareta de válvula



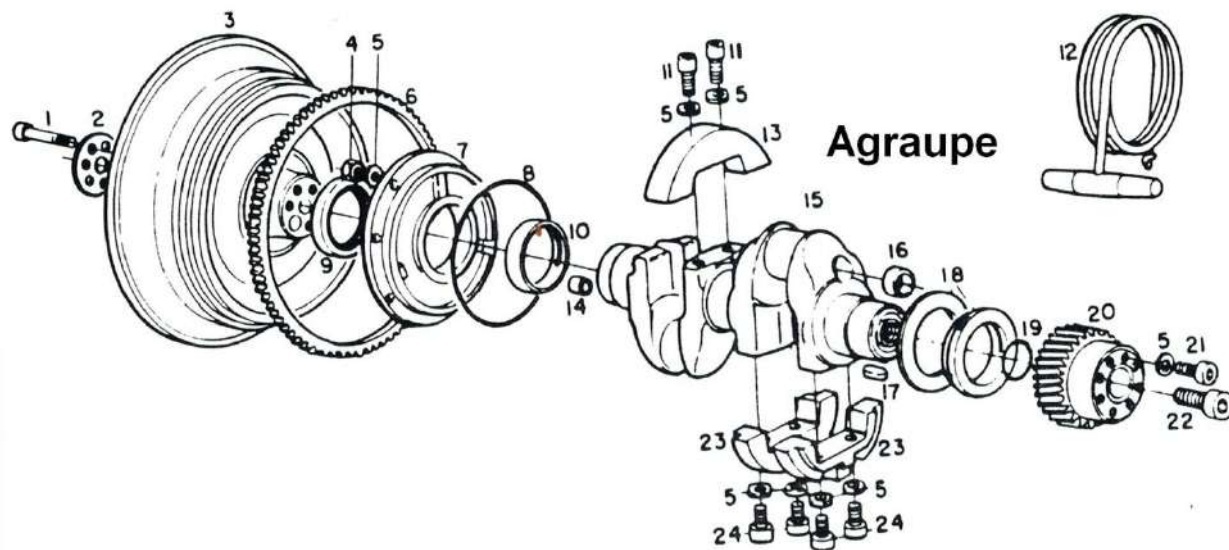


AGRALE

MOTOR M - 790

4

Virabrequim e Volante



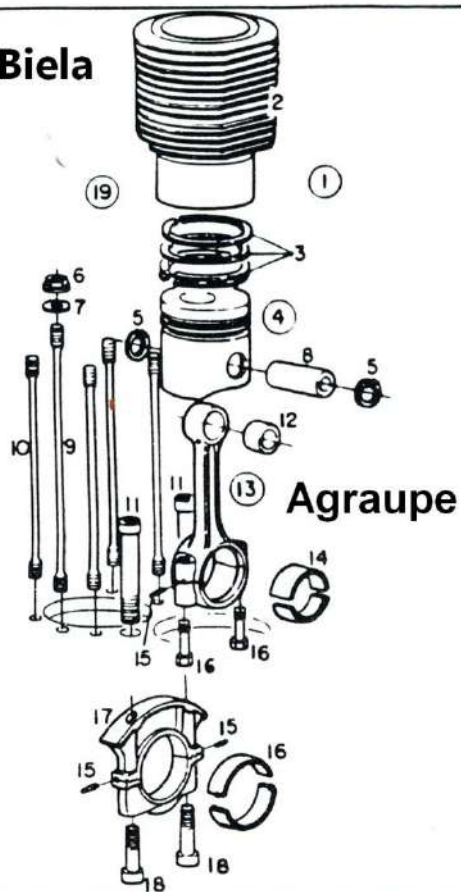


AGRALE

MOTOR M - 790

5

Cilindro Pistão Biela



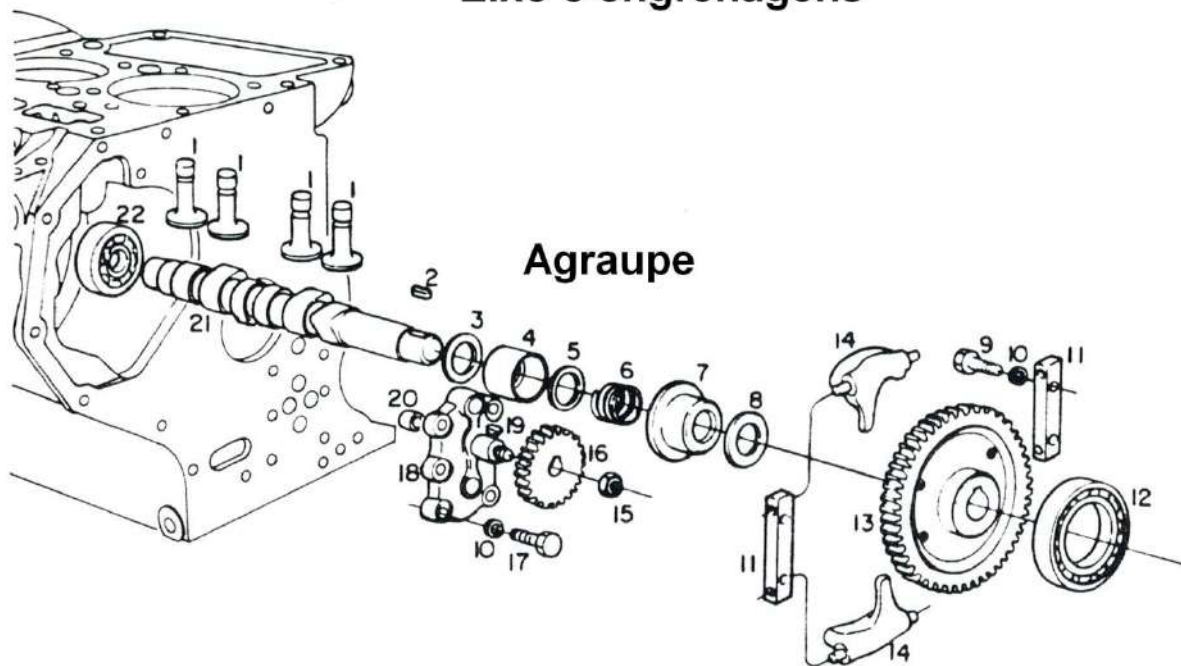


AGRALE

MOTOR M - 790

6

Eixo e engrenagens



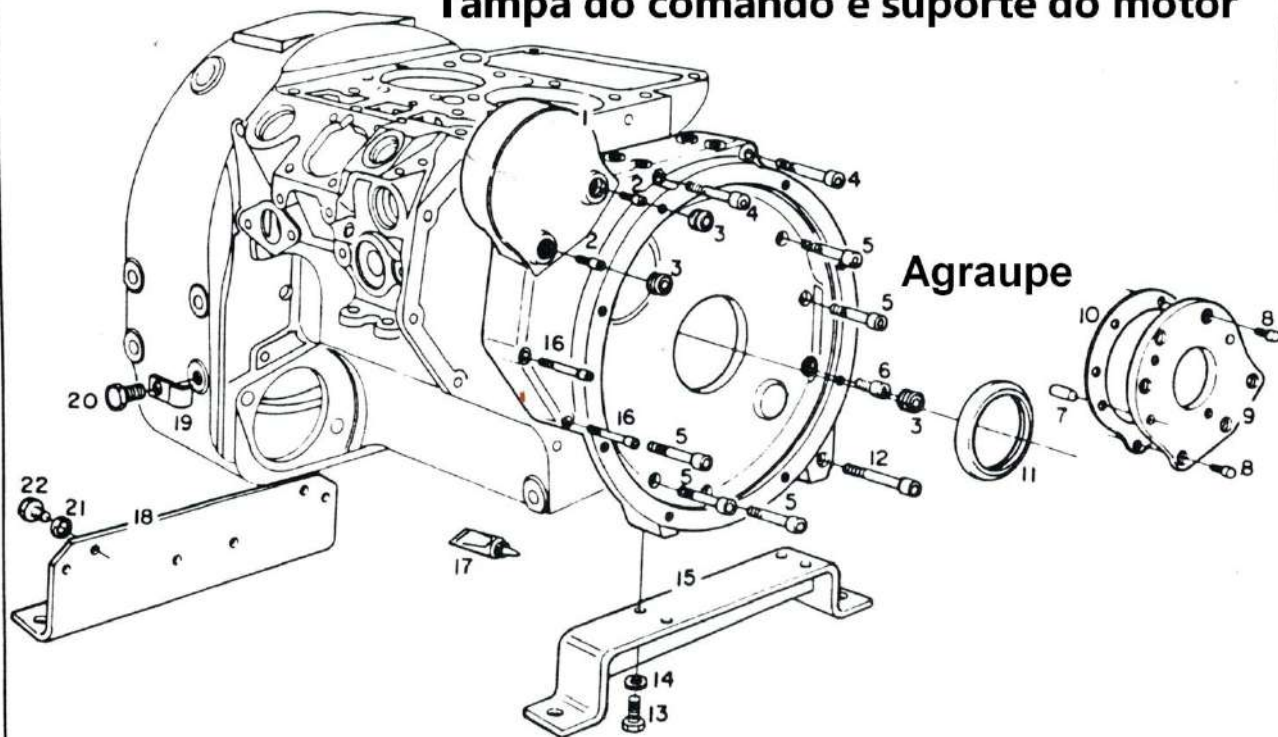


AGRALE

MOTOR M - 790

7

Tampa do comando e suporte do motor





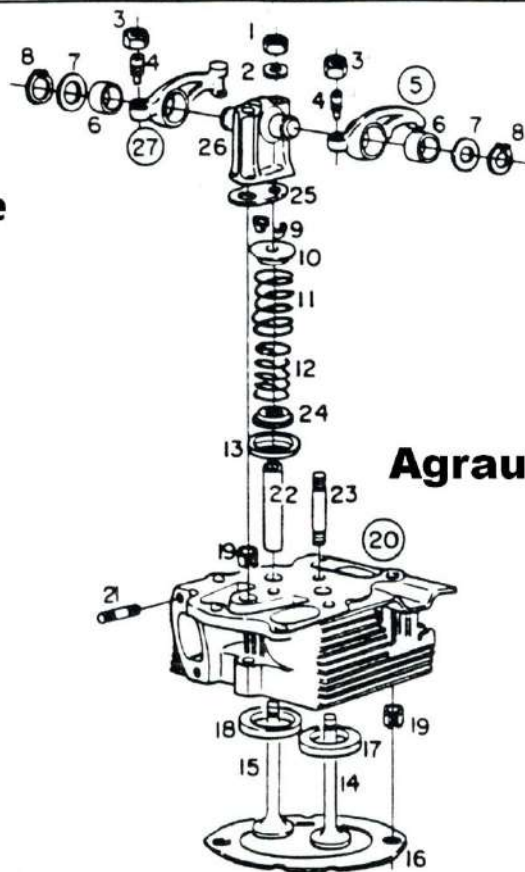
AGRALE

MOTOR M - 790

8

Cabeçote

Agraupe



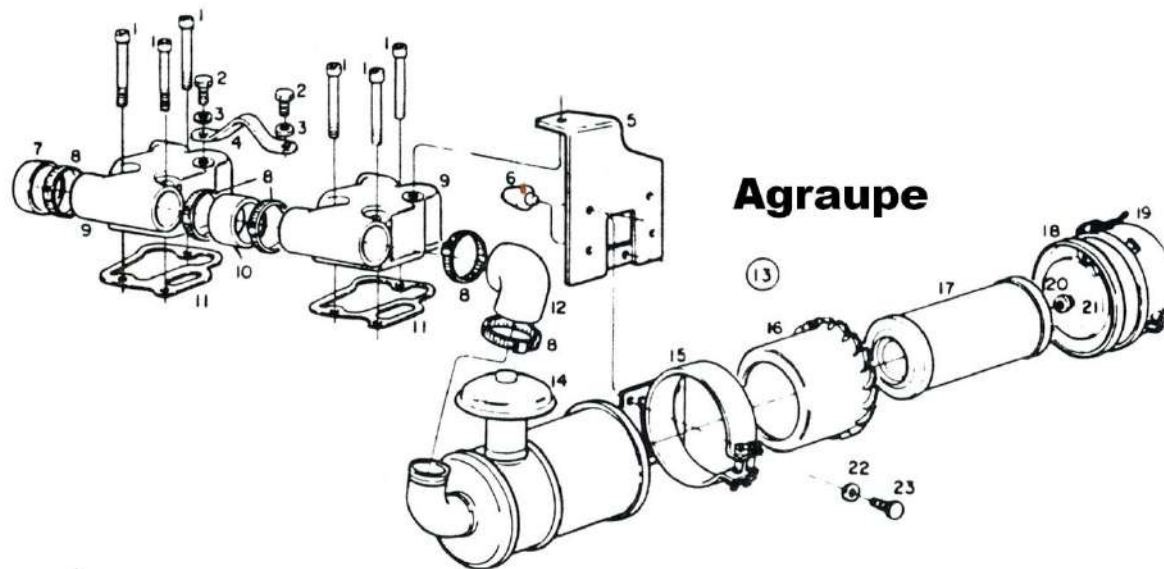


AGRALE

MOTOR M - 790

9

Tampa do cabeçote e Filtro de Ar





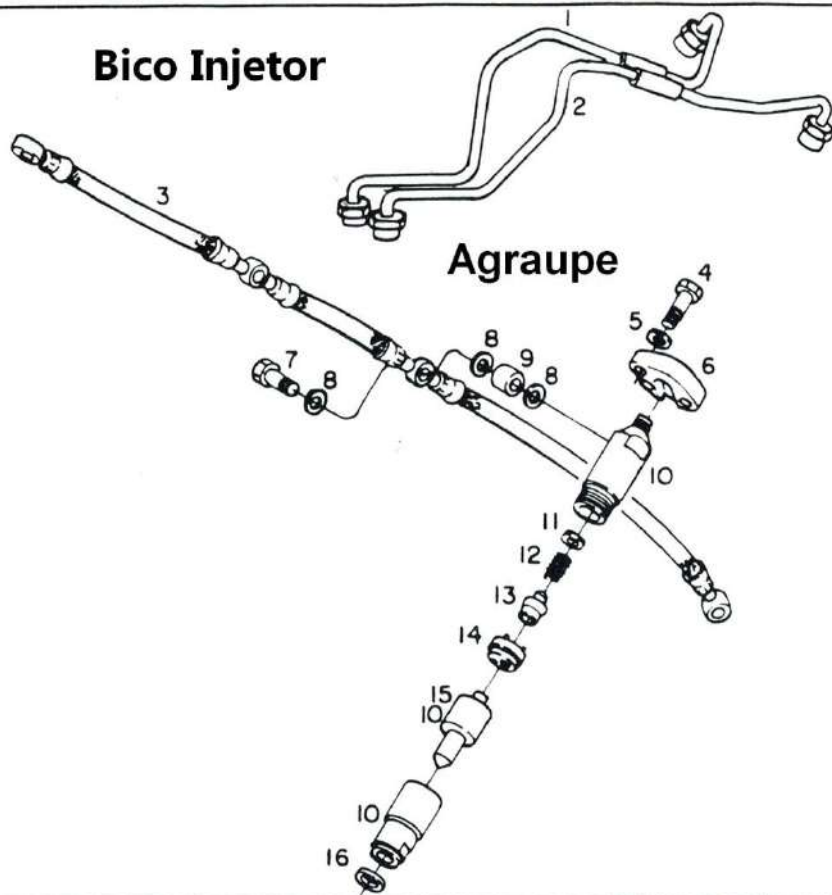
AGRALE

MOTOR M - 790

10

Bico Injetor

Agraupe



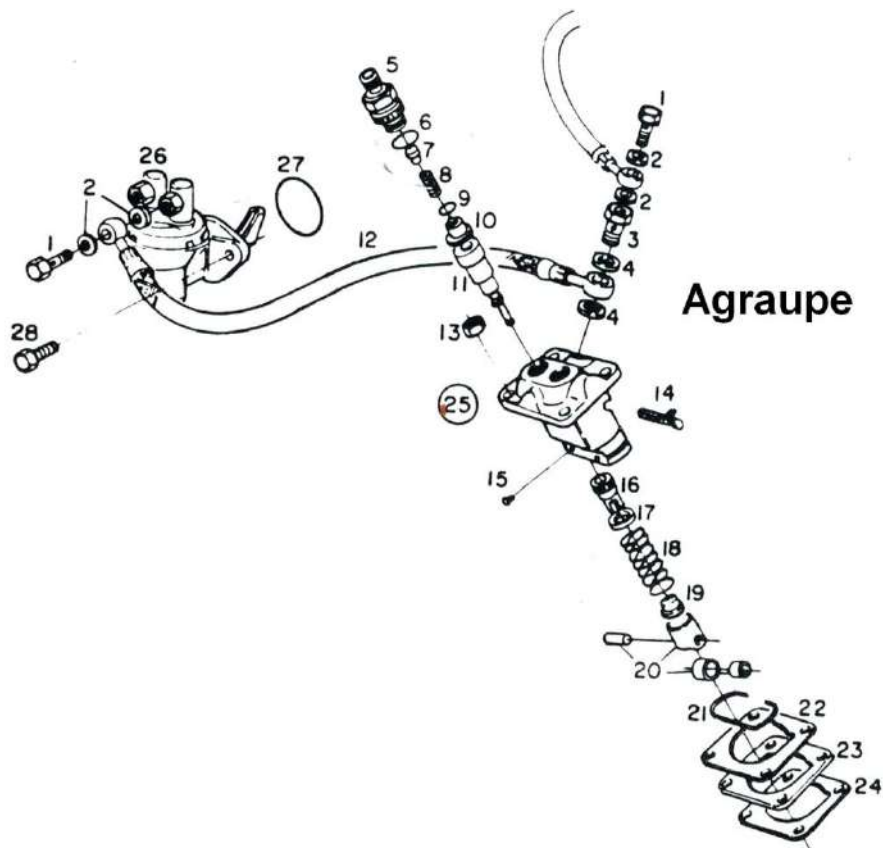


AGRALE

MOTOR M - 790

11

Bomba Alimentadora e Bomba Injetora



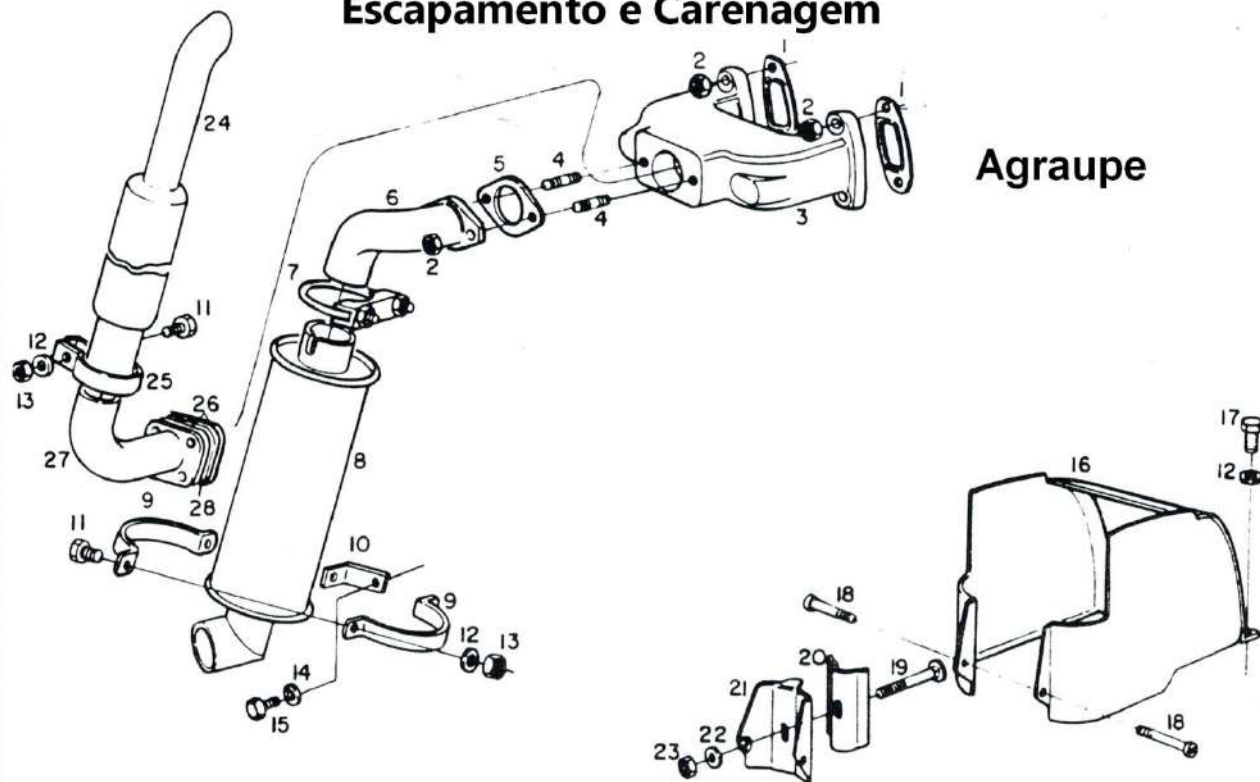


AGRALE

MOTOR M - 790

12

Escapamento e Carenagem



Agraupe



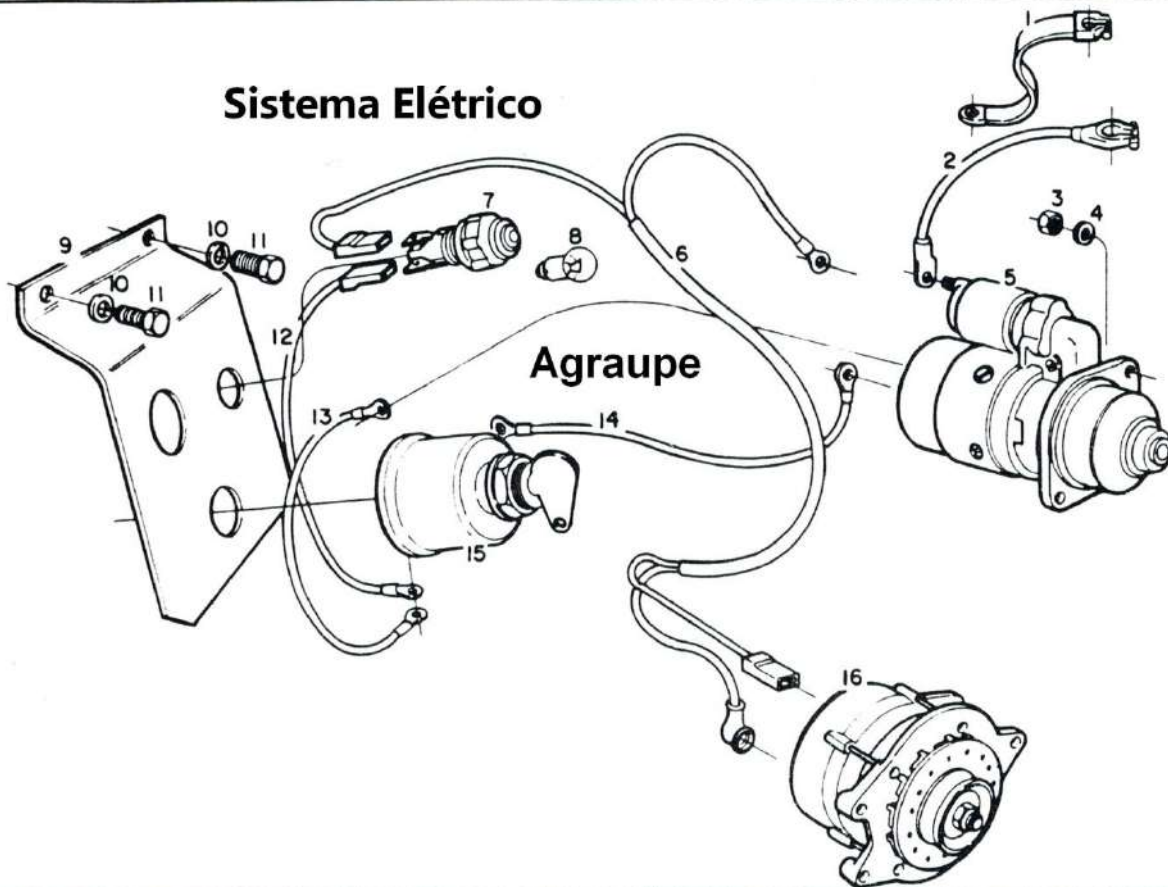
AGRALE

MOTOR M - 790

14

Sistema Eléctrico

Agraupe



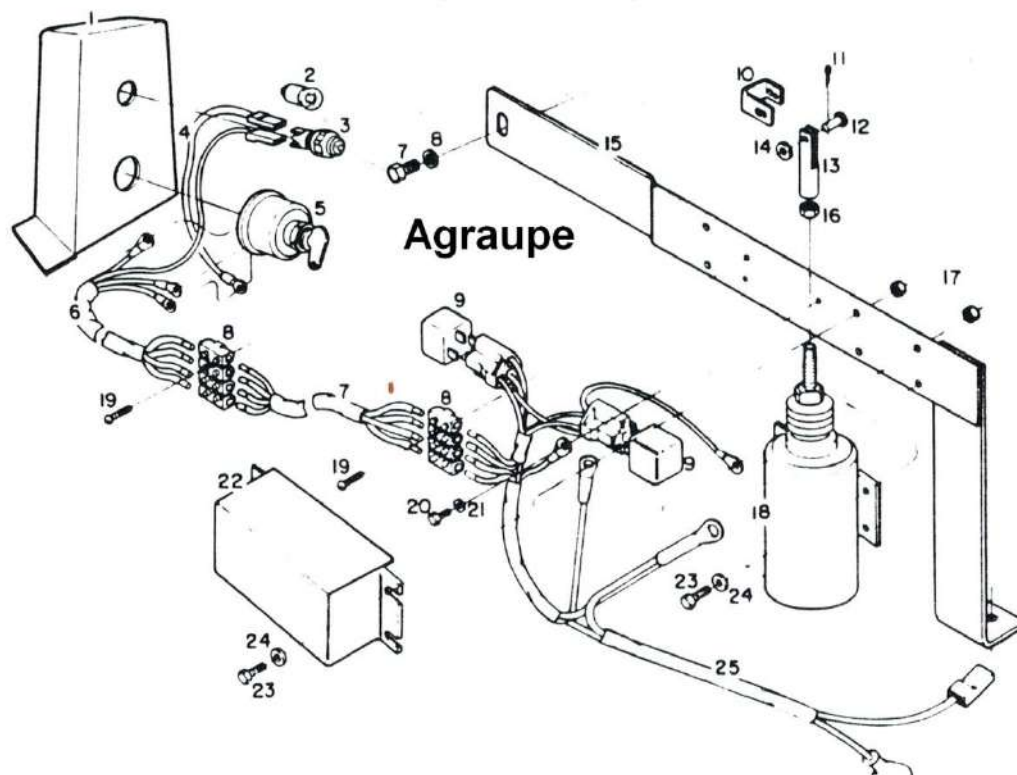


AGRALE

MOTOR M - 790

15

Sistema elétrico de partida e parada a Distância

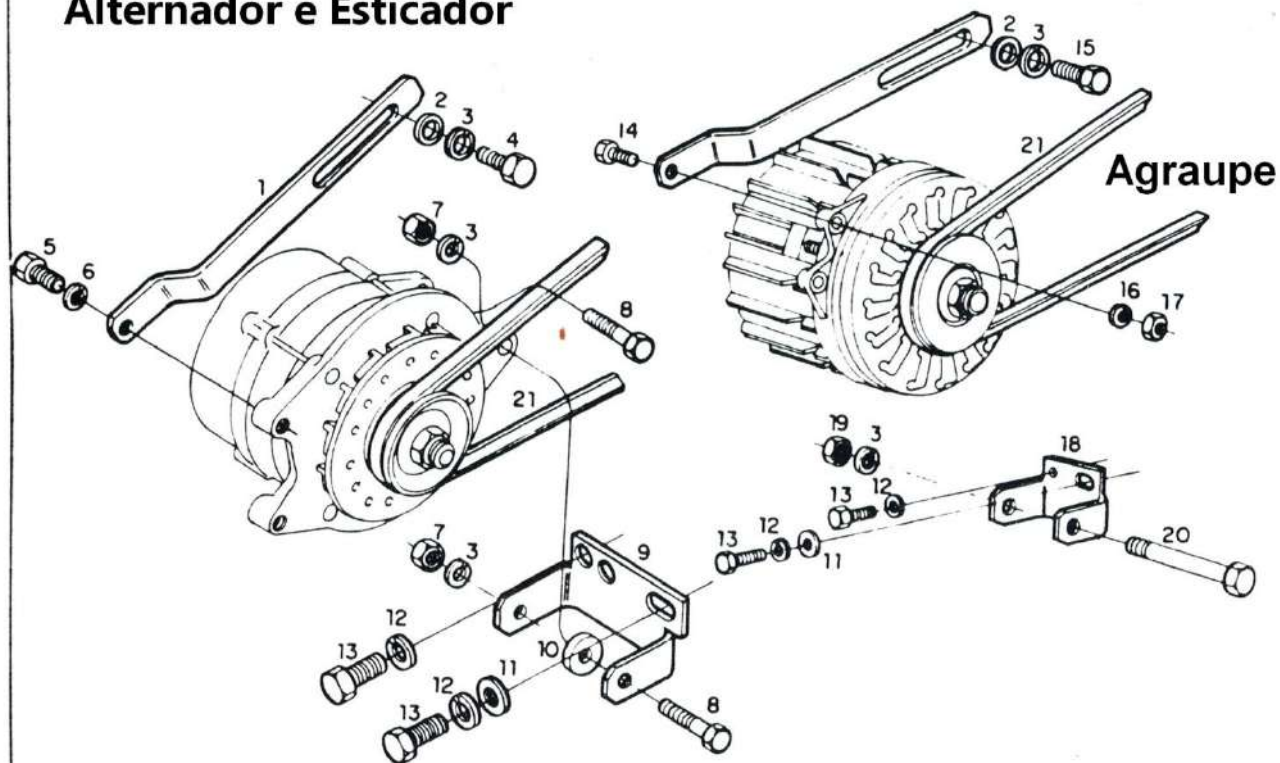




MOTOR M - 790

16

Alternador e Esticador



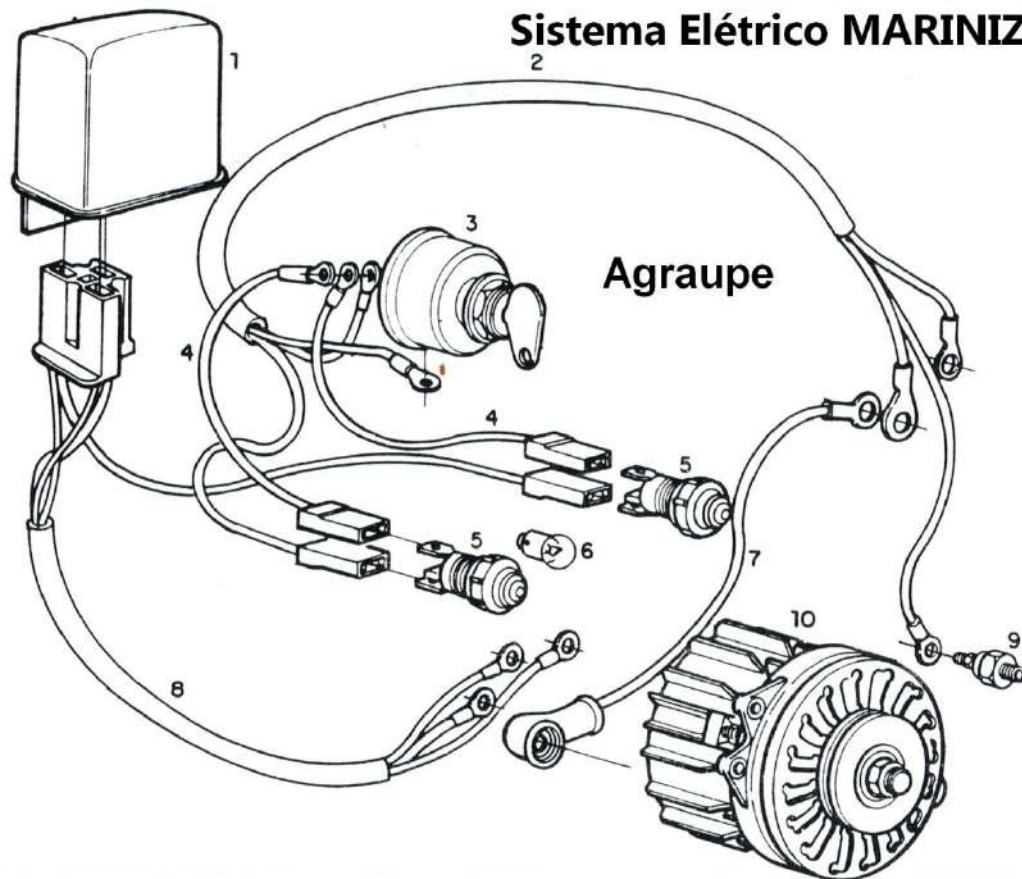


AGRALE

MOTOR M - 790

17

Sistema Eléctrico MARINIZADO



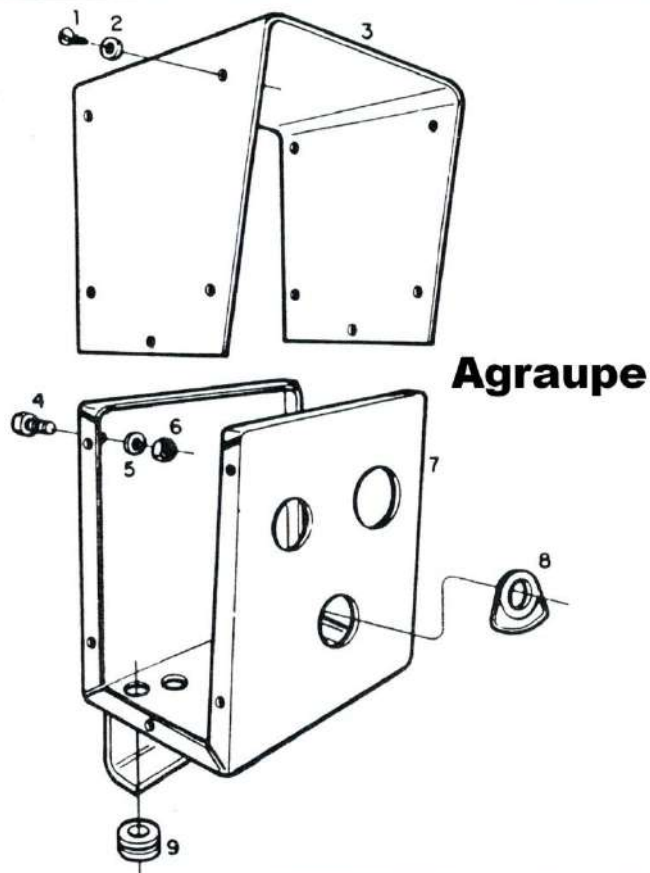
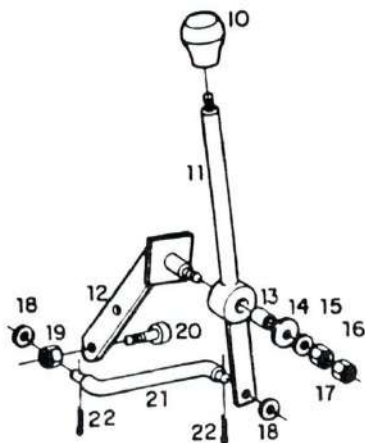


AGRALE

MOTOR M - 790

18

Alavanca Acelerador MARINIZADO



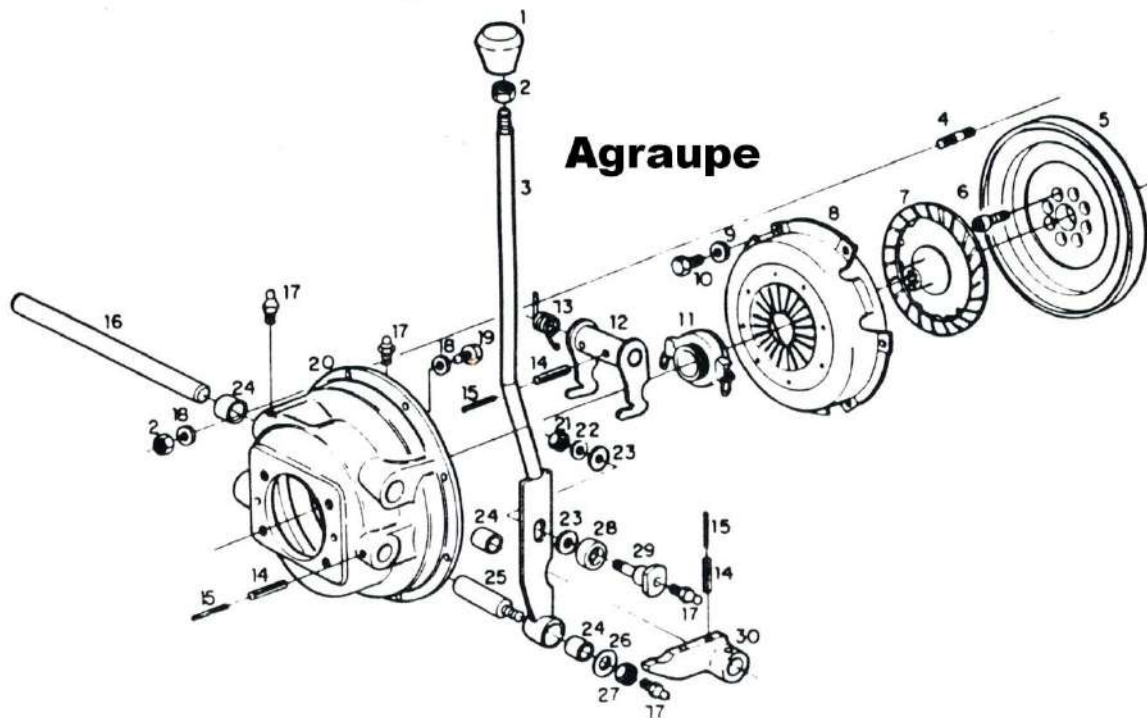


AGRALE

MOTOR M - 790

19

Sistema de Embreagem



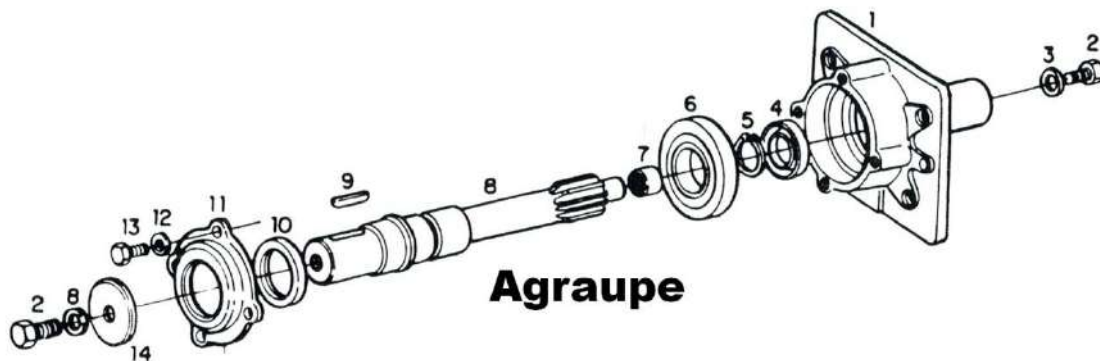


AGRALE

MOTOR M - 790

20

Sistema da tomada da força Radial





AGRALE

MOTOR M - 790

21

Polia e Luva Elástica

